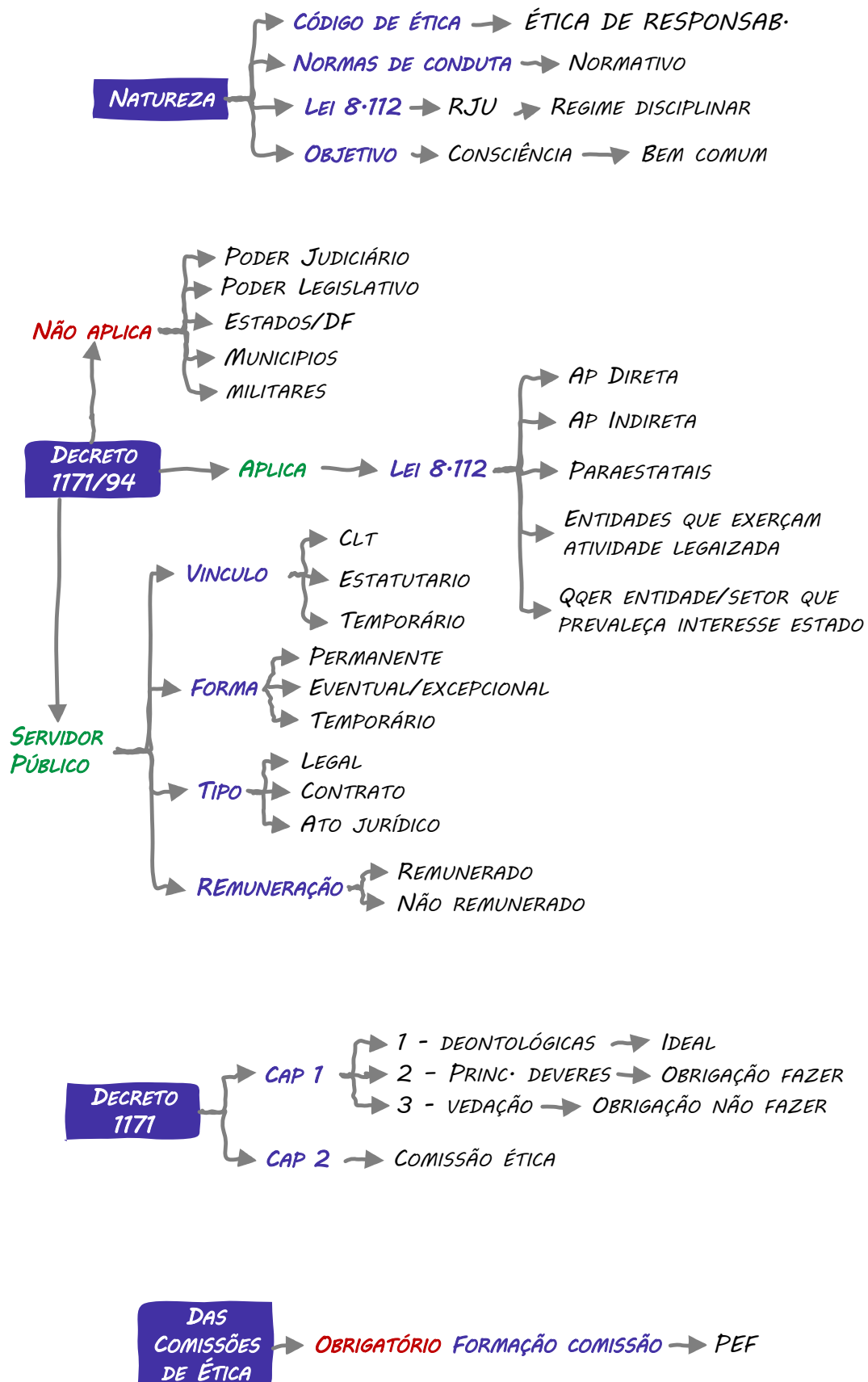


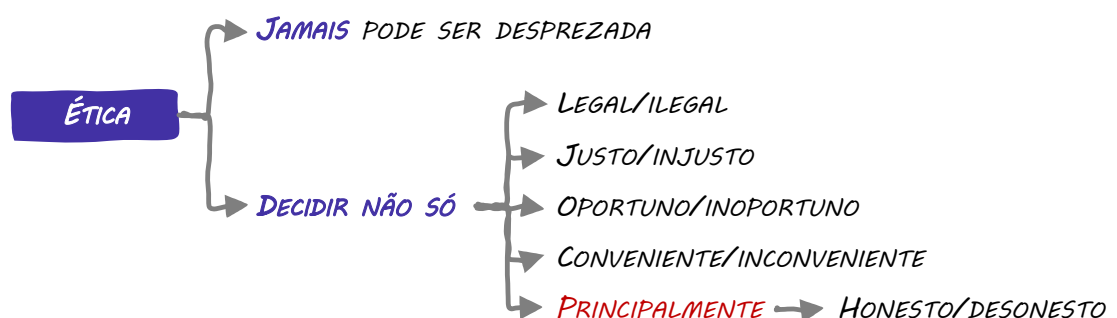
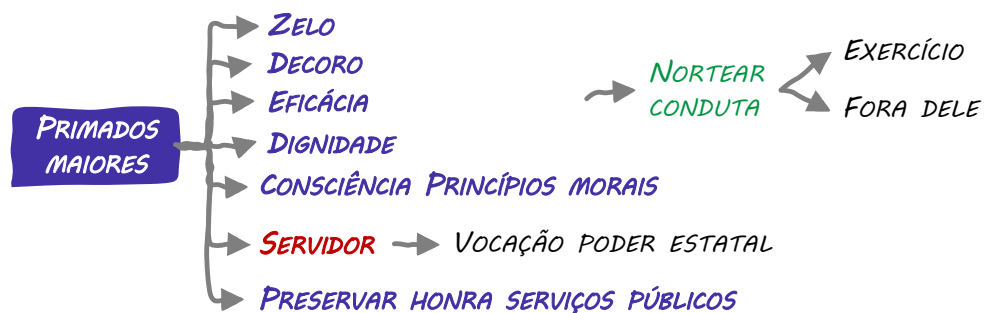
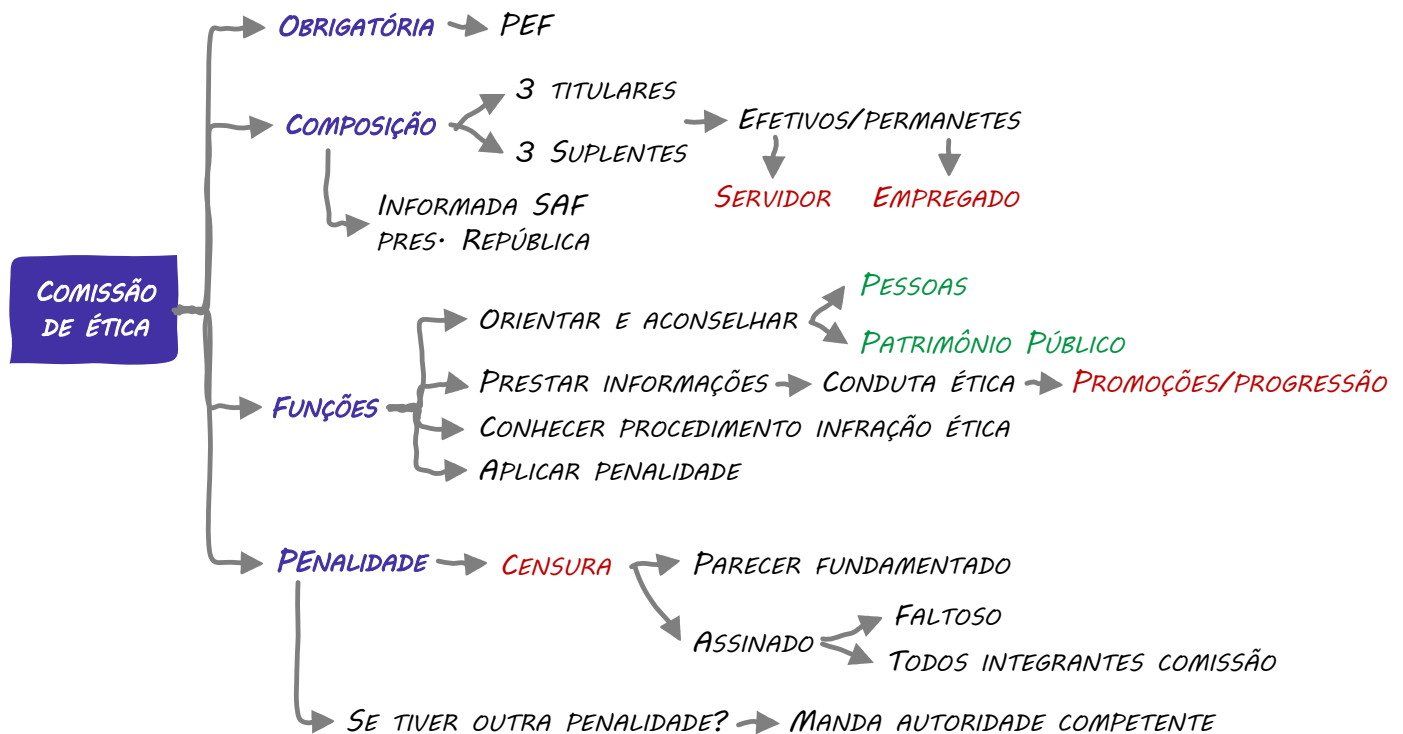


By @kakashi_copiador

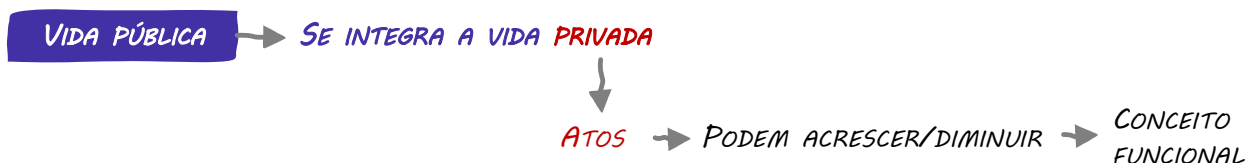
DECRETO Nº 1171/1994



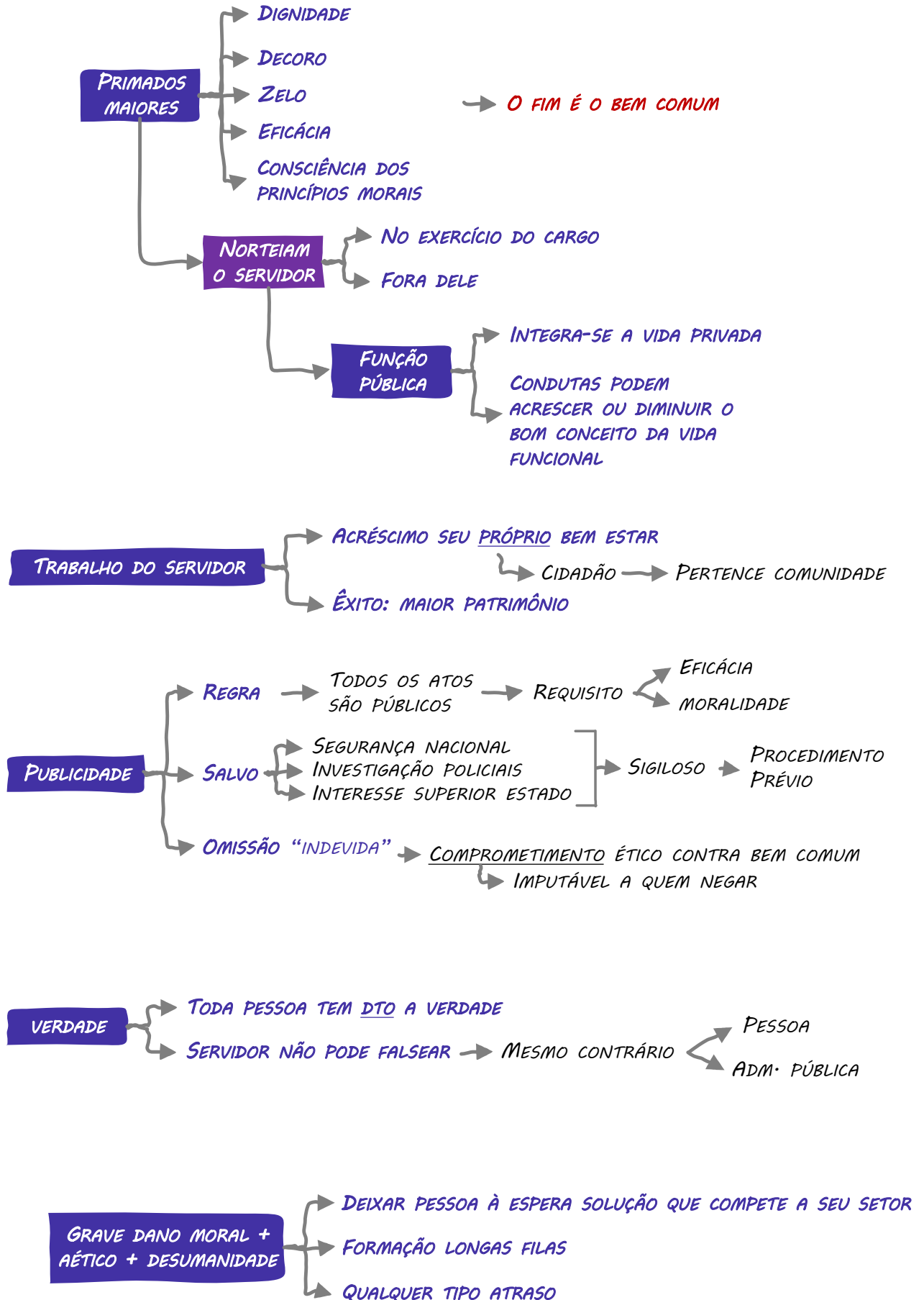
MAPAS MENTAIS



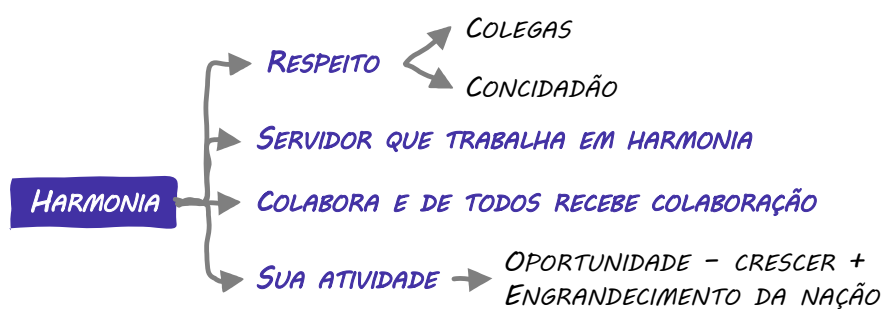
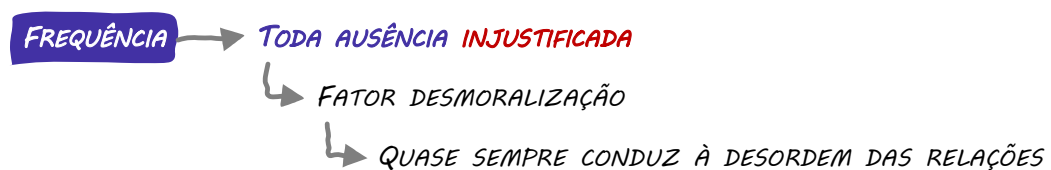
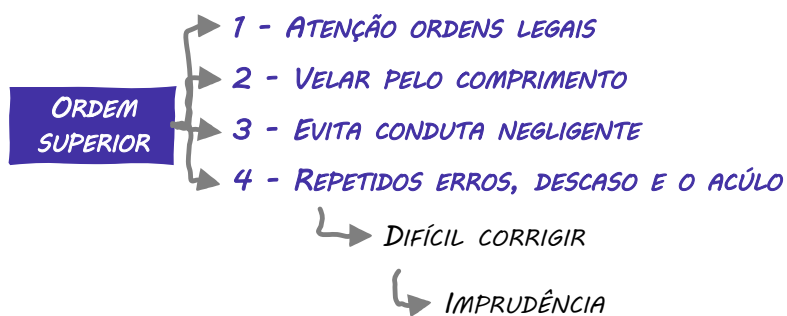
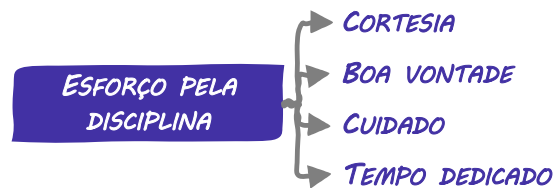
FUNÇÃO PÚBLICA → **PROFISSÃO**



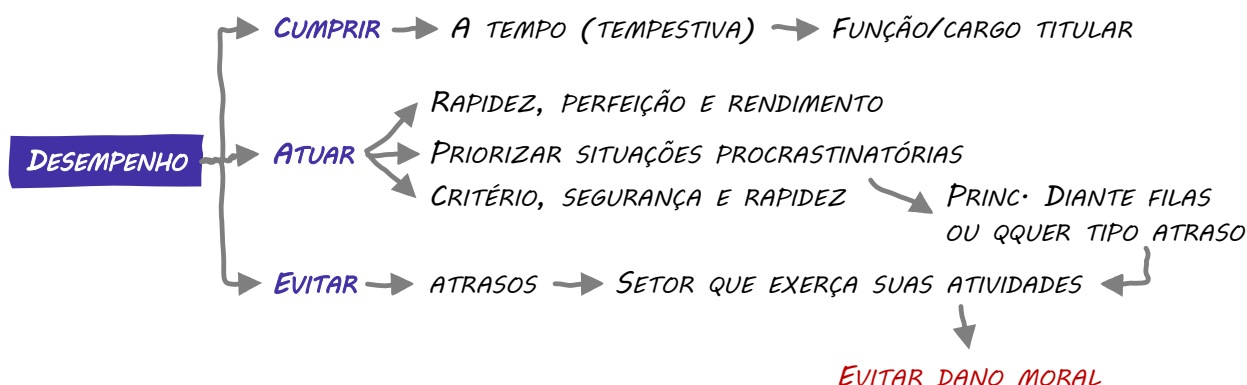
MAPAS MENTAIS



MAPAS MENTAIS



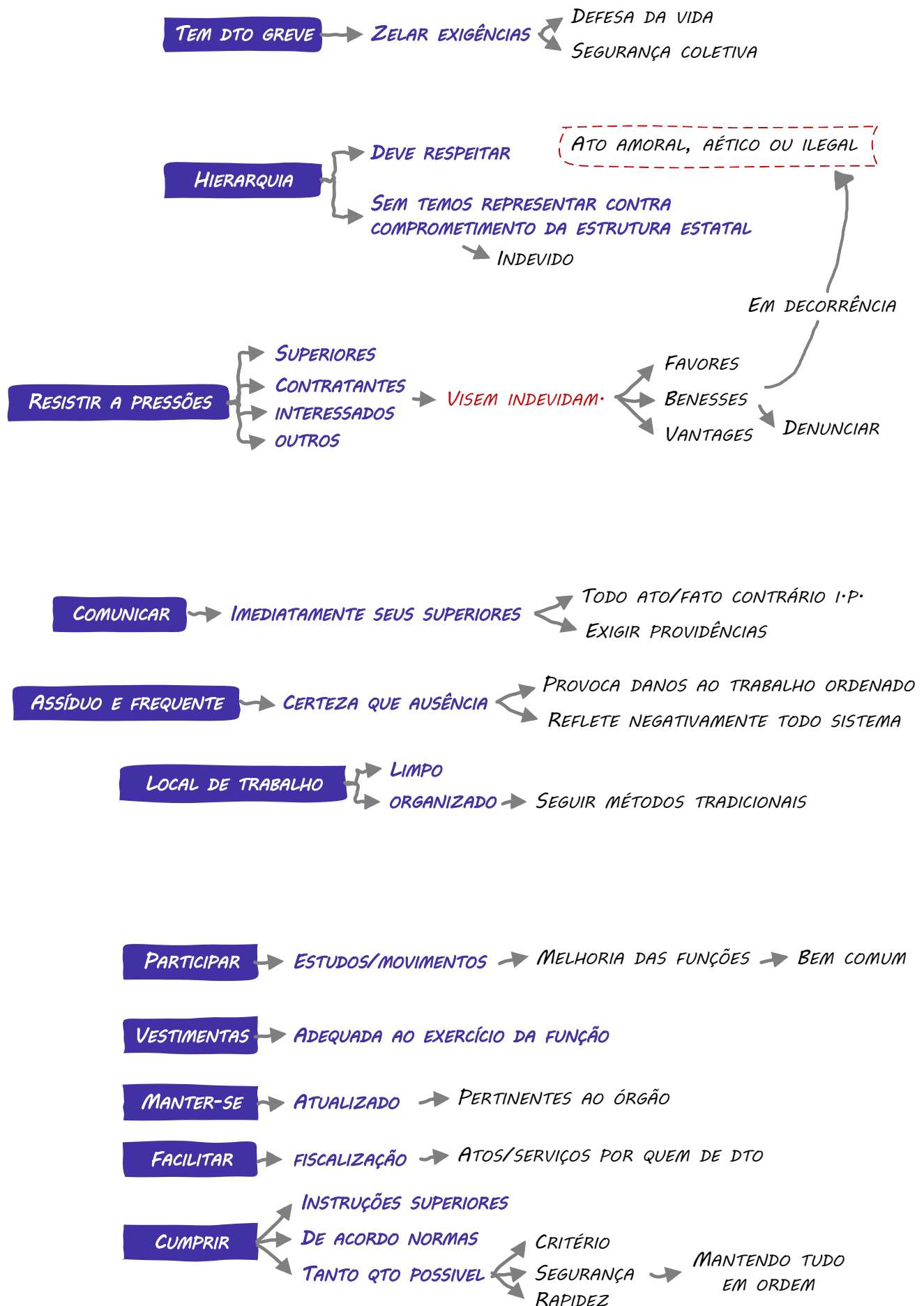
MAPAS MENTAIS



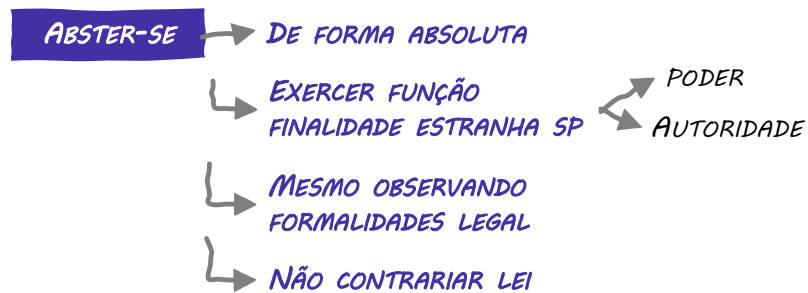
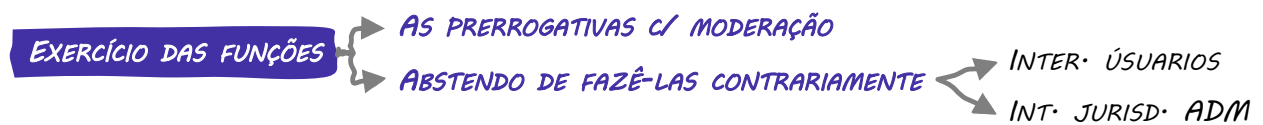
RELACIONAMENTO C/ PÚBLICO

- 1 TRATAR COM CUIDADO, ZELO E ATENÇÃO
- 2 SER CORTÊS, TER URBANIDADE, DISPONIBILIDADE E ATENÇÃO
- 3 RESPEITAR AS LIMITAÇÕES DOS USUÁRIOS
- 4 SEM PRECONCEITO → ABSTEM DE CAUSAR DANO MORAL

MAPAS MENTAIS



MAPAS MENTAIS



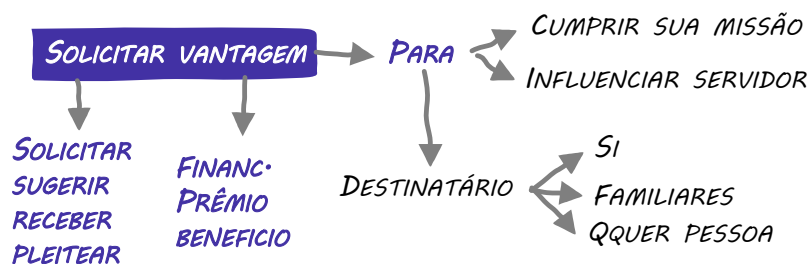
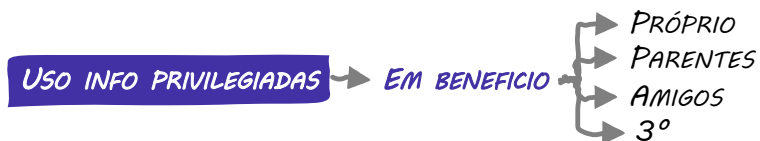
USO INDEVIDO DO CARGO



MAPAS MENTAIS



ILUDIR OU TENTAR ILUDIR QUALQUER PESSOA QUE NECESSITE DO ATENDIMENTO EM SERVIÇOS PÚBLICOS É VEDADO AO SERVIDOR PÚBLICO



↳ ALTERAR/DETURPAR DOC.

↳ DESVIAR SERVIDOR P/ INTERESSE PARTICULAR

↳ EMBRIAGADO

- NO SERVIÇO
- FORA DELE, HABITUALMENTE

↳ DAR A SEU CONCURSO A INSTITUIÇÃO ATENTE

- MORAL
- HONESTIDADE
- DIGNIDADE PESSOA

↳ EXERCER PROFISSÃO AÉTICA

↳ LIGAR SEU NOME A EMPRESA CUNHO DUVIDOSO

↳ DEIXAR DE UTILIZAR AVANÇOS

- TÉCNICOS
- CIENTÍFICOS