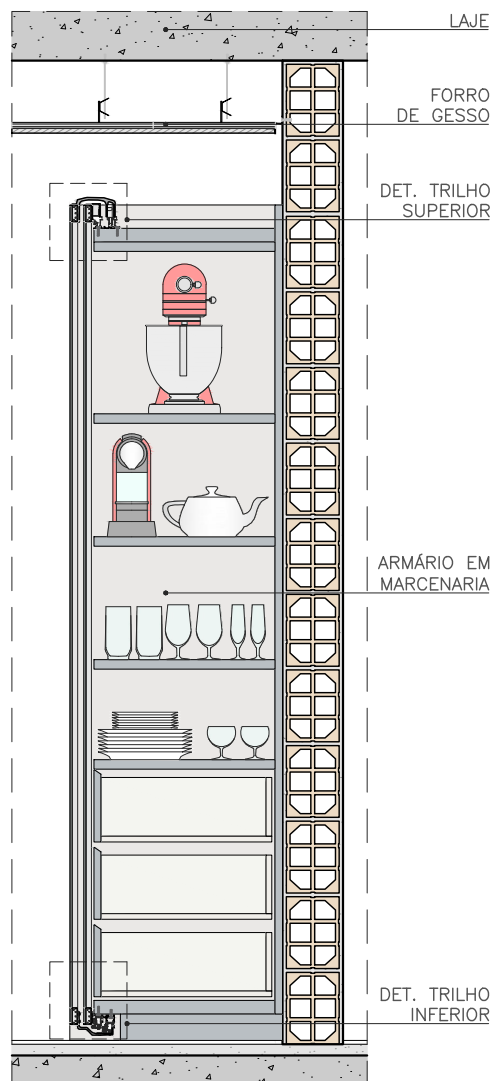


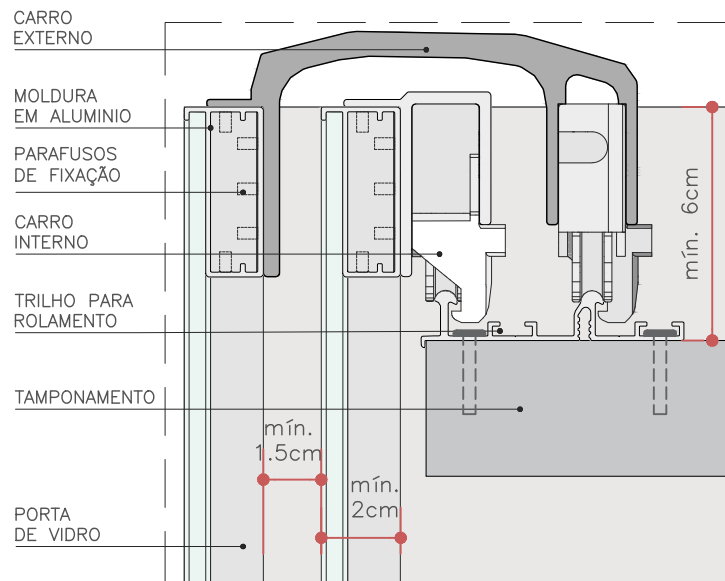
ISOMETRICA
SEM ESCALA



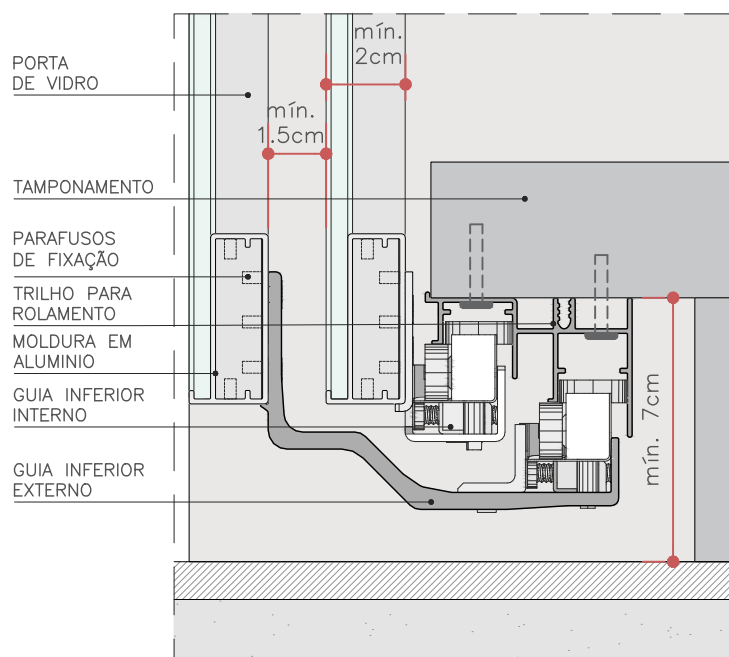
CORTE - PORTA DE VIDRO
ESC. 1:20

- MODELO DO TRILHO: DOMINUS LINHA ROYAL PARA ARMÁRIO SUSPENSO
- LARGURA MÍNIMA PARA PORTA: 60cm (VARIA COM FABRICANTE)
- PESO MÁXIMO PARA PORTA: 80Kg (VARIA COM FABRICANTE)
- TRILHO FIXADO COM PARAFUSOS NA ESTRUTURA DO ARMÁRIO EM MARCENARIA





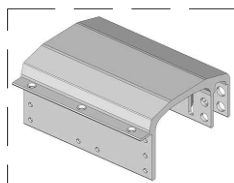
DET. TRILHO SUPERIOR - PORTA DE VIDRO
ESC. 1:2



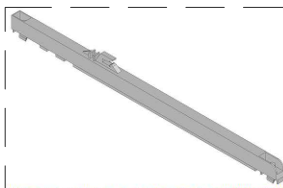
DET. TRILHO INFERIOR - PORTA DE VIDRO
ESC. 1:2

- MODELO DO TRILHO: DOMINUS LINHA ROYAL PARA ARMÁRIO SUSPENSO
- LARGURA MÍNIMA PARA PORTA: 60cm (VARIA COM FABRICANTE)
- PESO MÁXIMO PARA PORTA: 80Kg (VARIA COM FABRICANTE)
- TRILHO FIXADO COM PARAFUSOS NA ESTRUTURA DO ARMÁRIO EM MARCENARIA

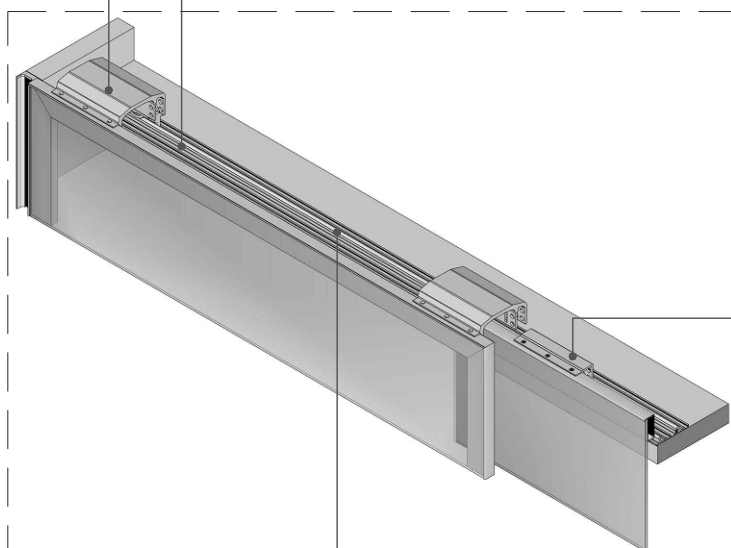




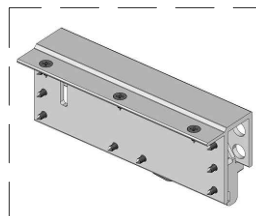
CARRO SUPERIOR EXTERNO



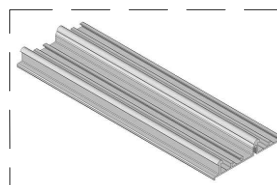
AMORTECEDOR



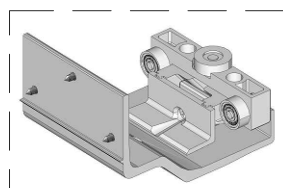
ISOMETRICA SUPERIOR
SEM ESCALA



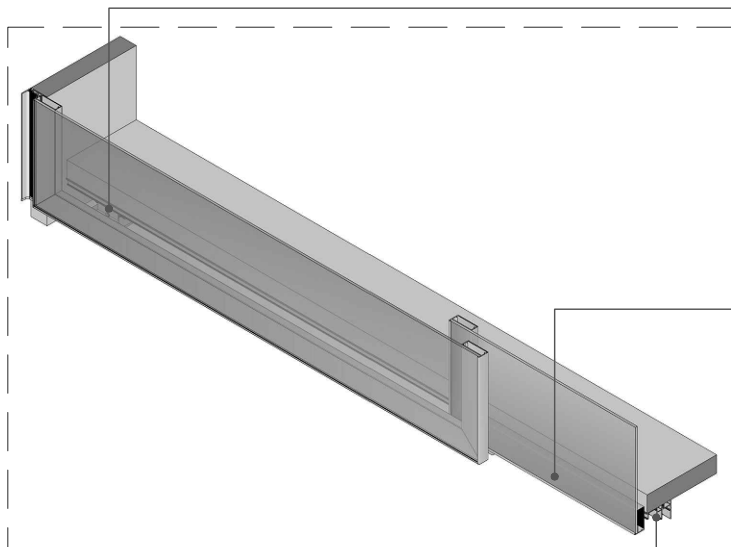
CARRO SUPERIOR INTERNO



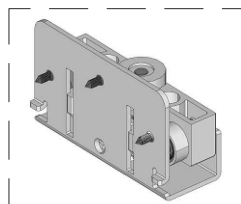
TRILHO METÁLICO SUPERIOR



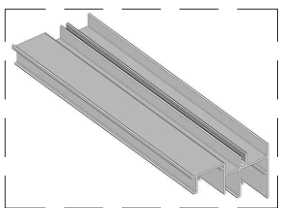
CARRO SUPERIOR EXTERNO



ISOMETRICA INFERIOR
SEM ESCALA

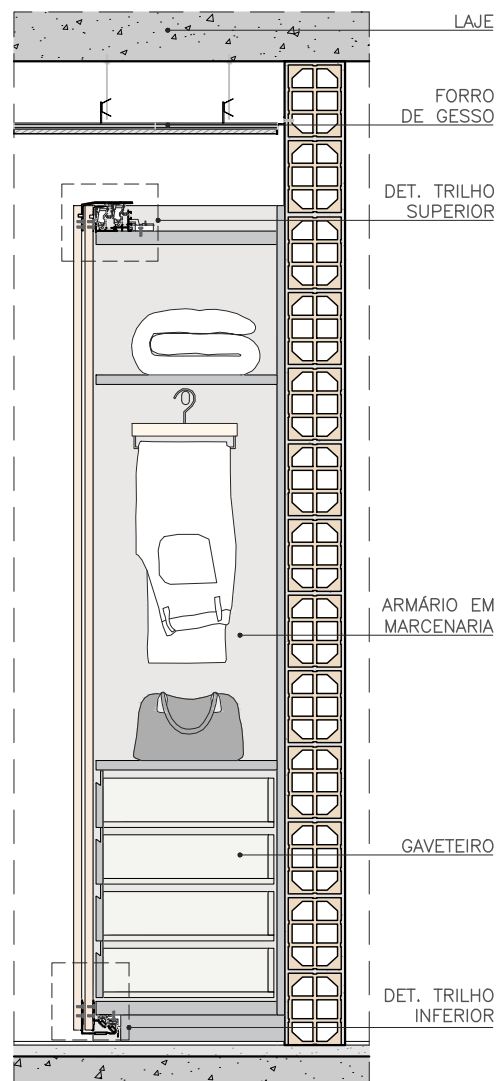


CARRO SUPERIOR EXTERNO



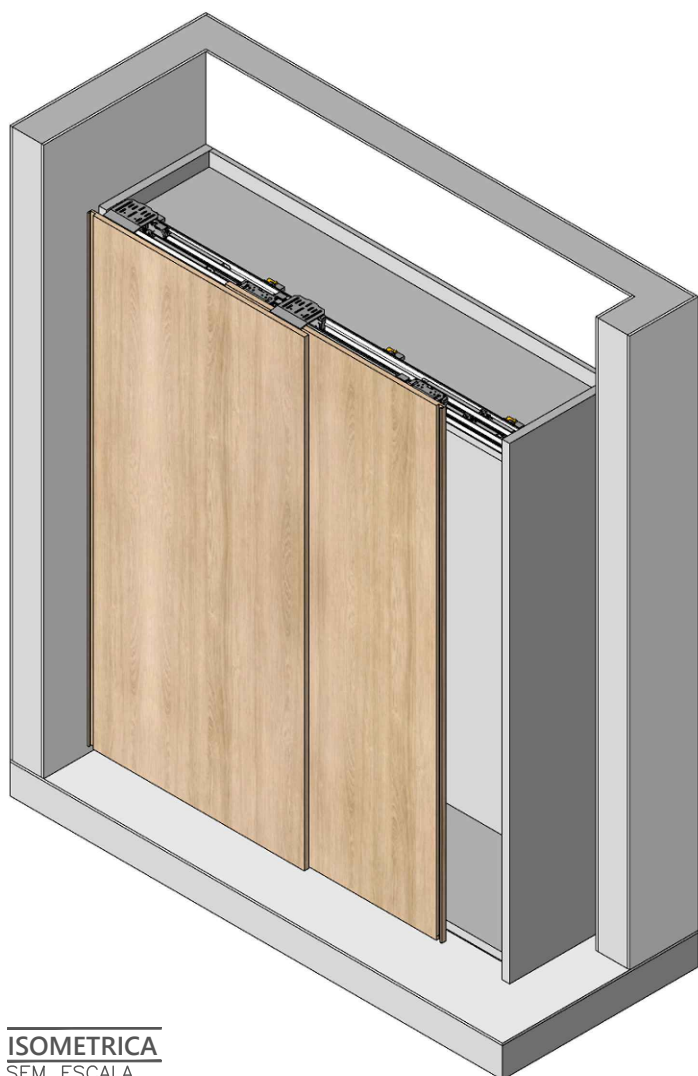
TRILHO METÁLICO INFERIOR



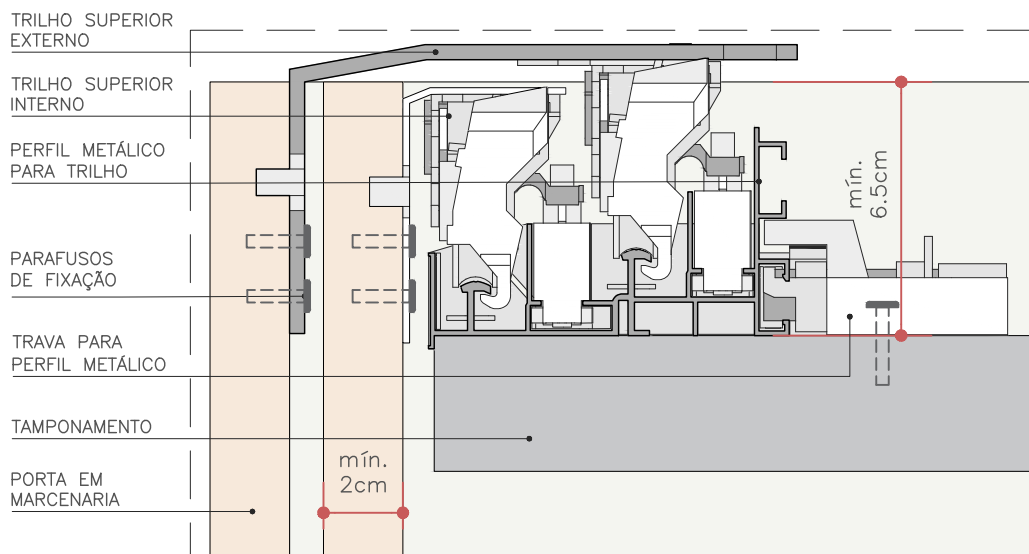


CORTE
ESC. 1:20

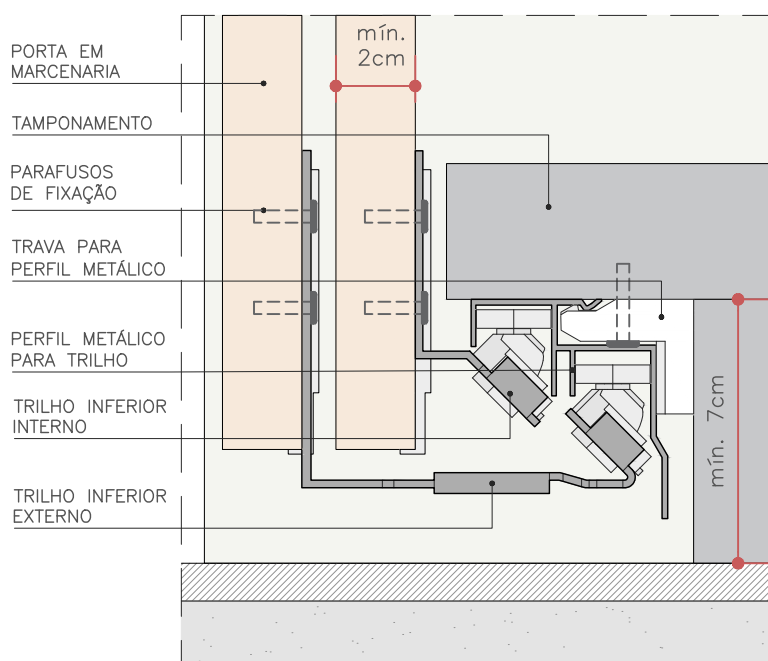
- MODELO DO TRILHO: HETTICH LINHA TOPLINE XL PARA ARMÁRIO SUSPENSO
- ESPESSURA MÍNIMA PARA PORTA: 18mm (VARIA COM FABRICANTE)
- PESO MÁXIMO PARA PORTA: 80Kg (VARIA COM FABRICANTE)
- TRILHO FIXADO COM PARAFUSOS NA ESTRUTURA DO ARMÁRIO EM MARCENARIA
- MODELO DE TRILHO UTILIZADO APENAS PARA PORTAS DE ARMÁRIO EM MARCENARIA



ISOMETRICA
SEM ESCALA



DET. TRILHO SUPERIOR - PORTA EM MARCENARIA
ESC. 1:2



DET. TRILHO INFERIOR - PORTA EM MARCENARIA
ESC. 1:2

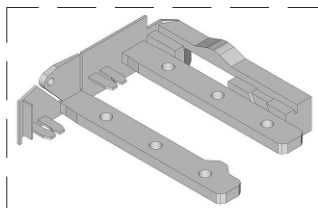
■ MODELO DO TRILHO: HETTICH LINHA TOPLINE XL PARA ARMÁRIO SUSPENSO

■ ESPESSURA MÍNIMA PARA PORTA: 18mm (VARIA COM FABRICANTE)
■ PESO MÁXIMO PARA PORTA: 80Kg (VARIA COM FABRICANTE)

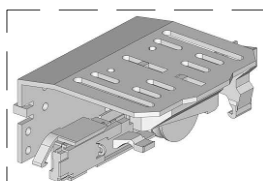
■ TRILHO FIXADO COM PARAFUSOS NA ESTRUTURA DO ARMÁRIO EM MARCENARIA

■ MODELO DE TRILHO UTILIZADO APENAS PARA PORTAS DE ARMÁRIO EM MARCENARIA

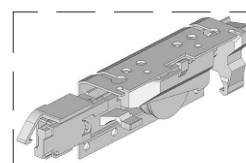




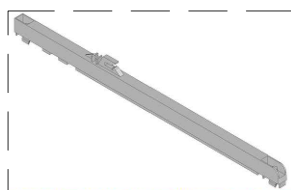
CAPA LATERAL PARA FIXAÇÃO DO PERFIL NO ARMÁRIO



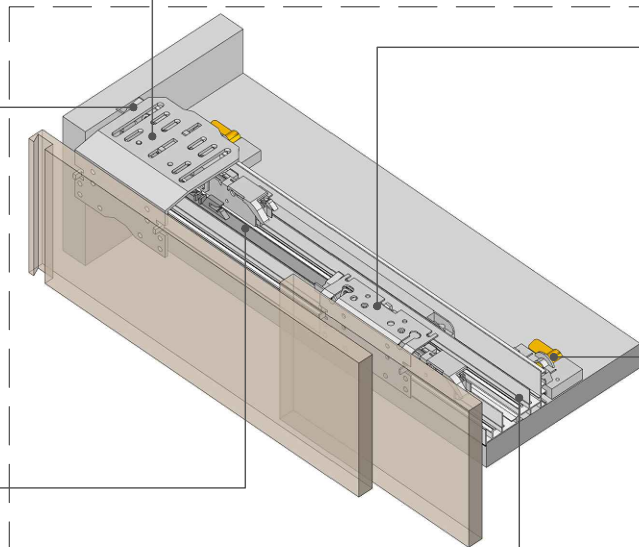
TRILHO SUPERIOR EXTERNO



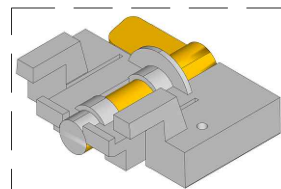
TRILHO SUPERIOR INTERNO



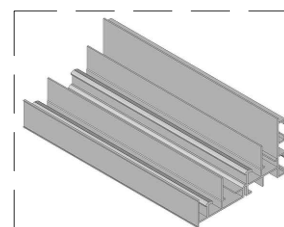
AMORTECEDOR



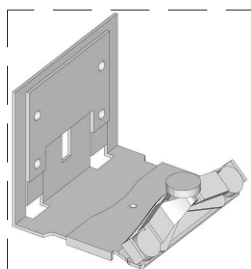
ISOMETRICA SUPERIOR
SEM ESCALA



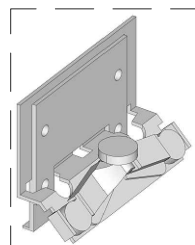
TRAVA PARA O PERFIL METÁLICO SUPERIOR



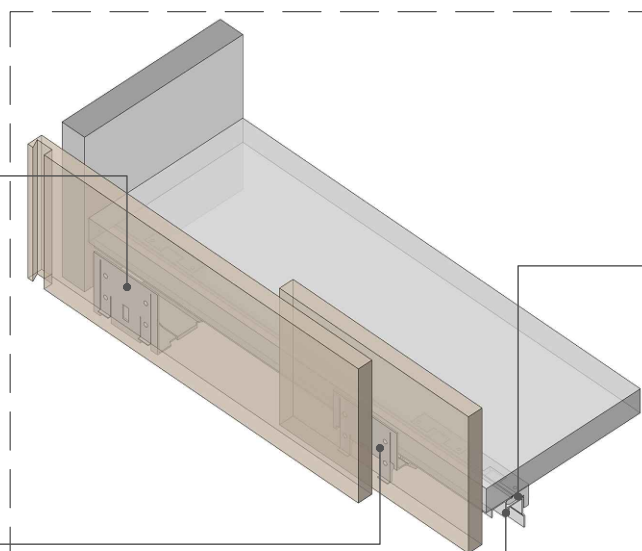
PERFIL METÁLICO SUPERIOR



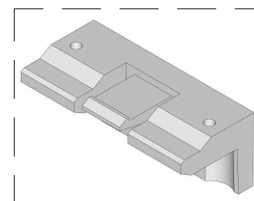
TRILHO INFERIOR EXTERNO



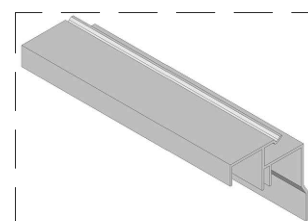
TRILHO INFERIOR INTERNO



ISOMETRICA INFERIOR
SEM ESCALA



TRAVA PARA O PERFIL METÁLICO INFERIOR



PERFIL METÁLICO INFERIOR

