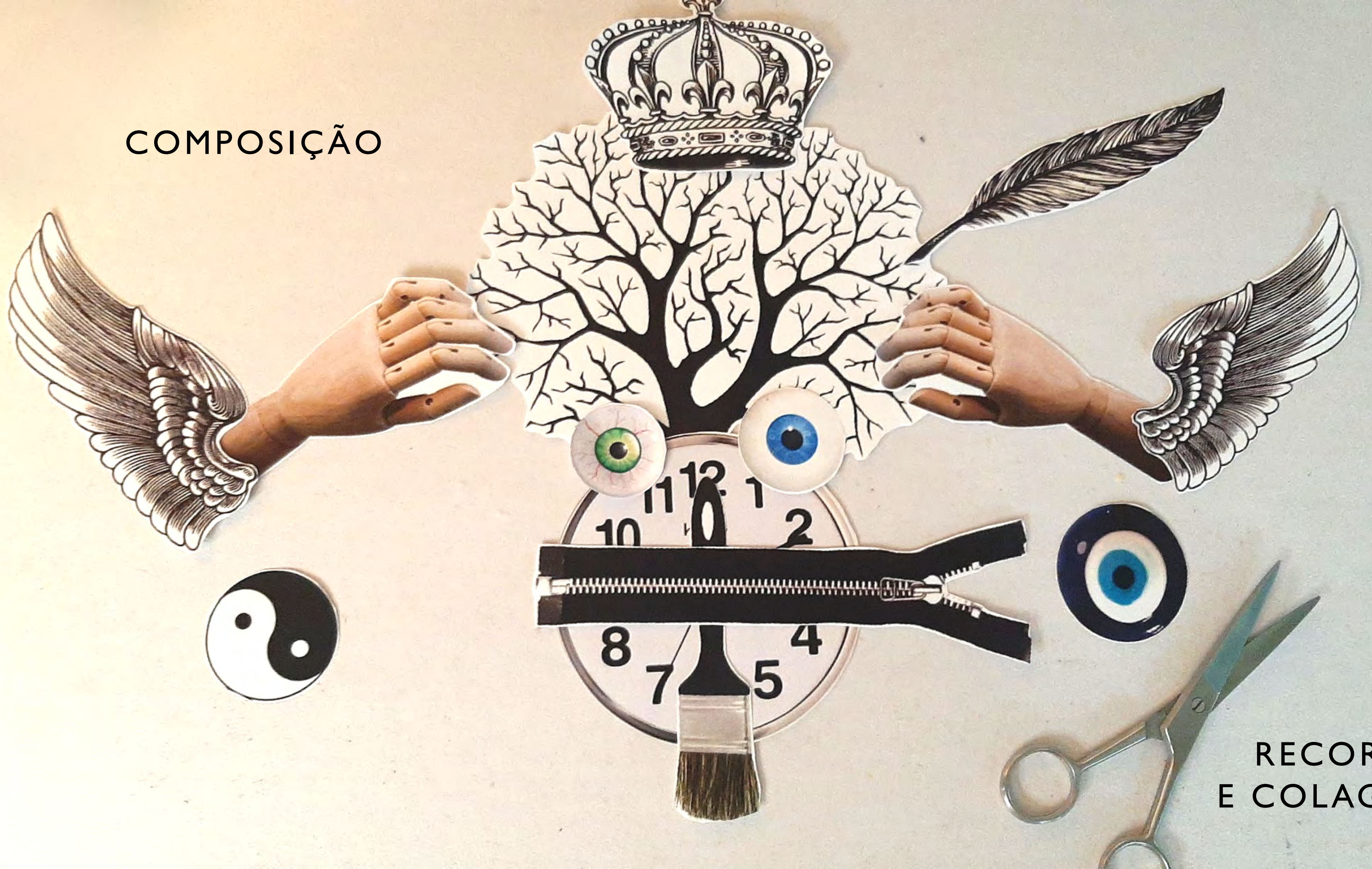


TÉCNICAS EXPERIMENTAIS

MODULO TÉCNICAS EXPERIMENTAIS

AULAS PRÁTICAS

COMPOSIÇÃO



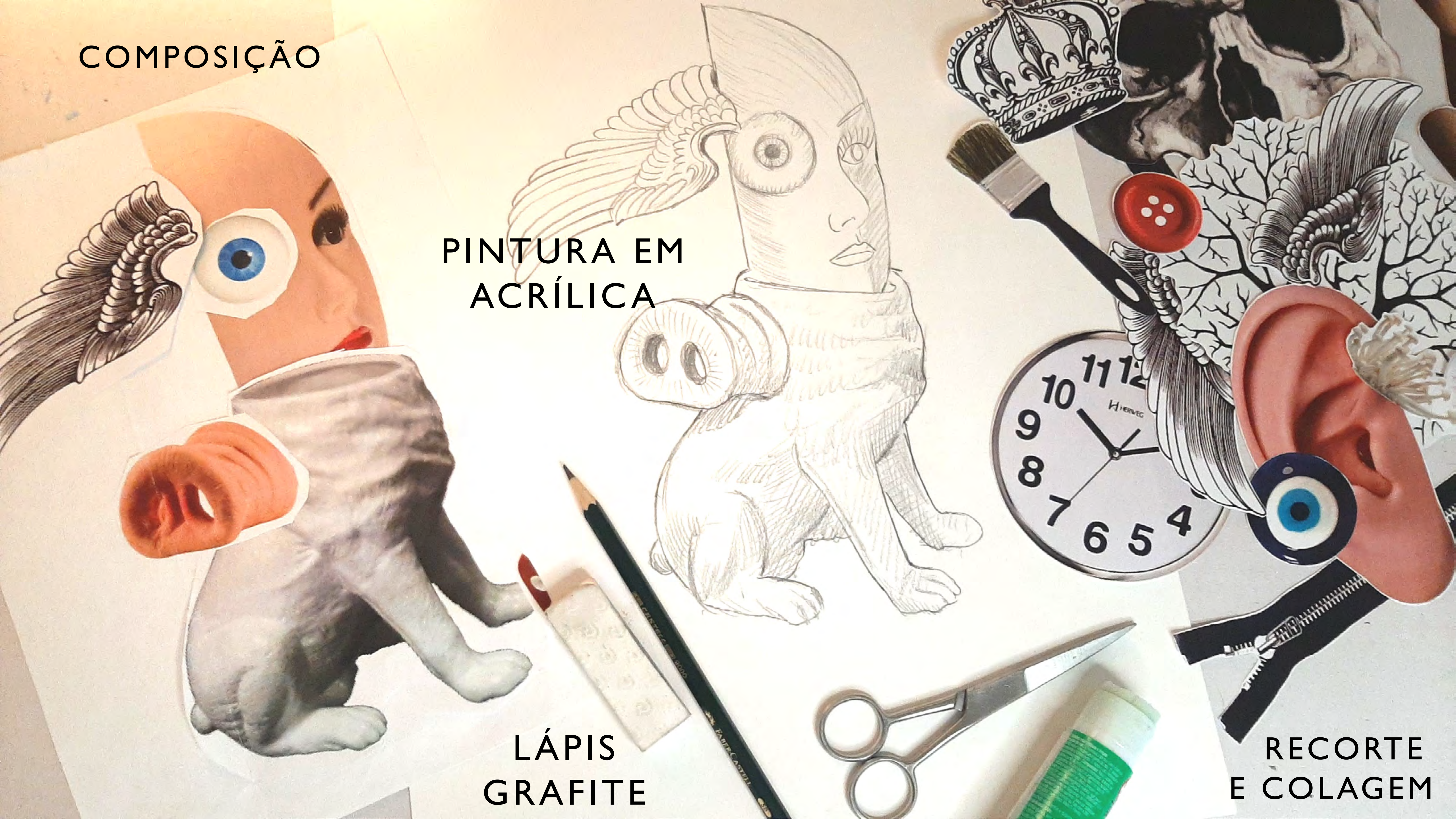
RECORTE
E COLAGEM

COMPOSIÇÃO

PINTURA EM
ACRÍLICA

LÁPIS
GRAFITE

RECORTE
E COLAGEM



COMPOSIÇÃO



RECORTE
E COLAGEM

NANQUIM

GUACHE
BRANCO

ESTILETE
RASPAGEM





FOTOGRAFIA



CANETA
HIDROCOR

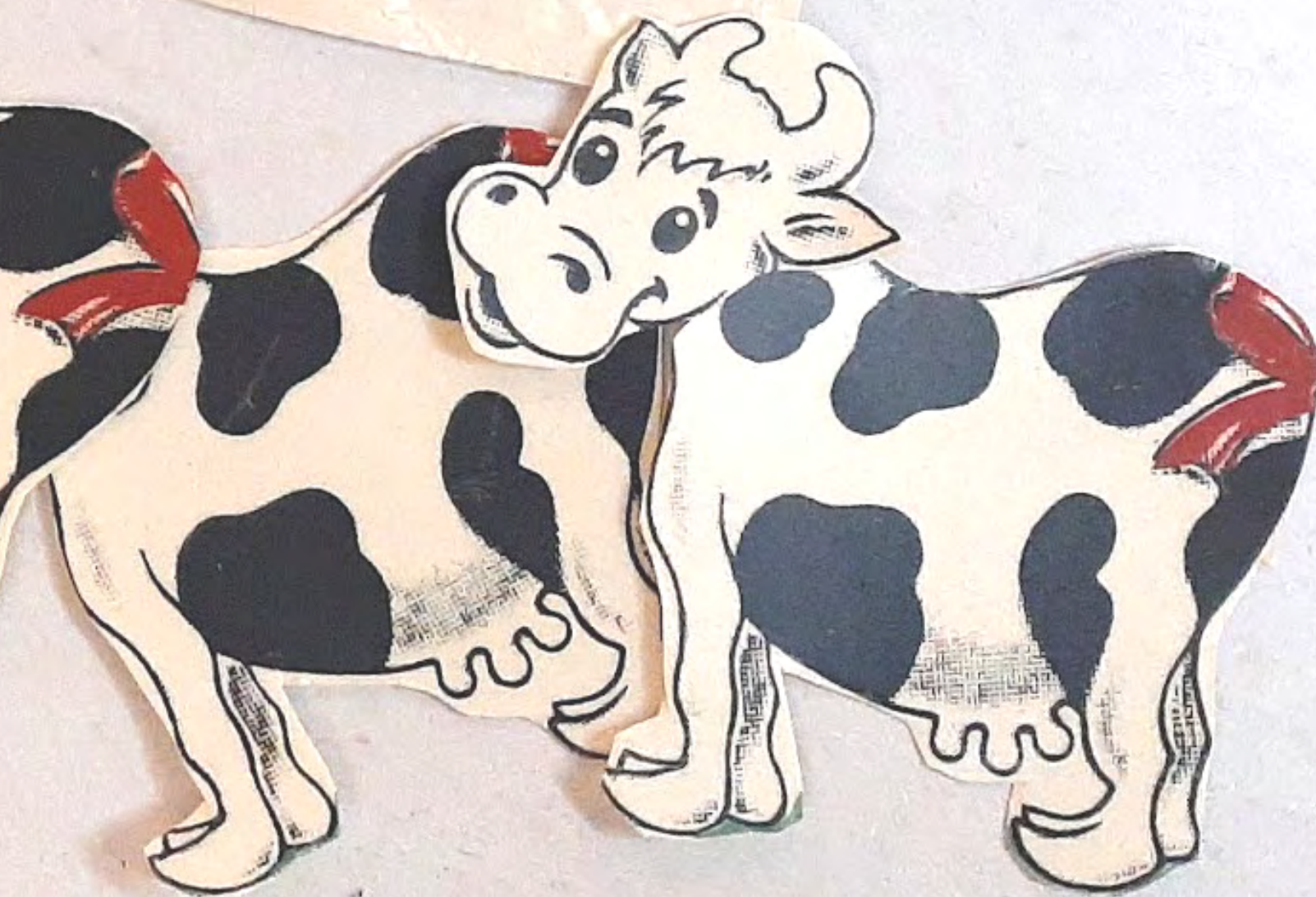
ESTILETE



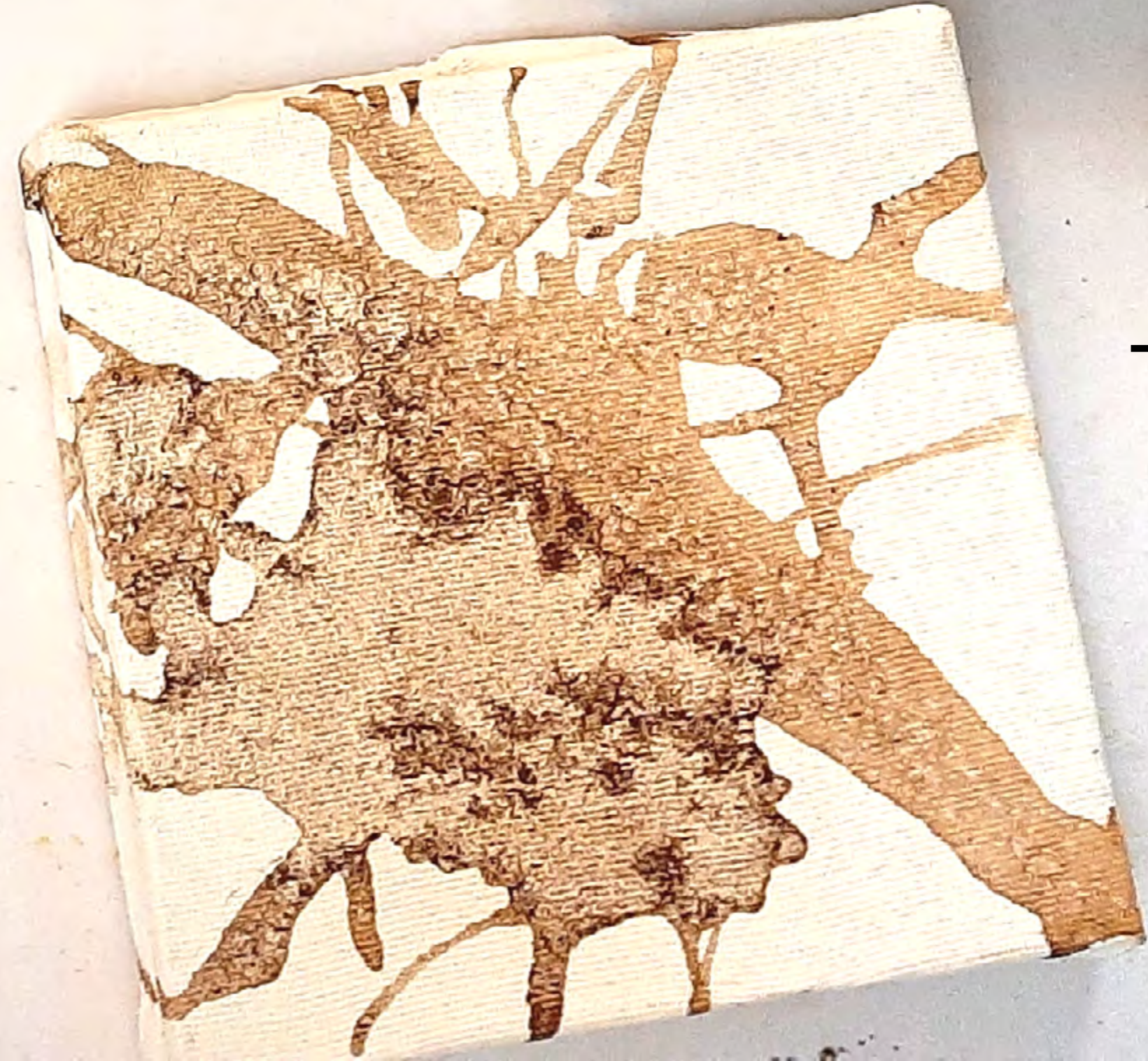
COMPOSIÇÃO



DECALQUE



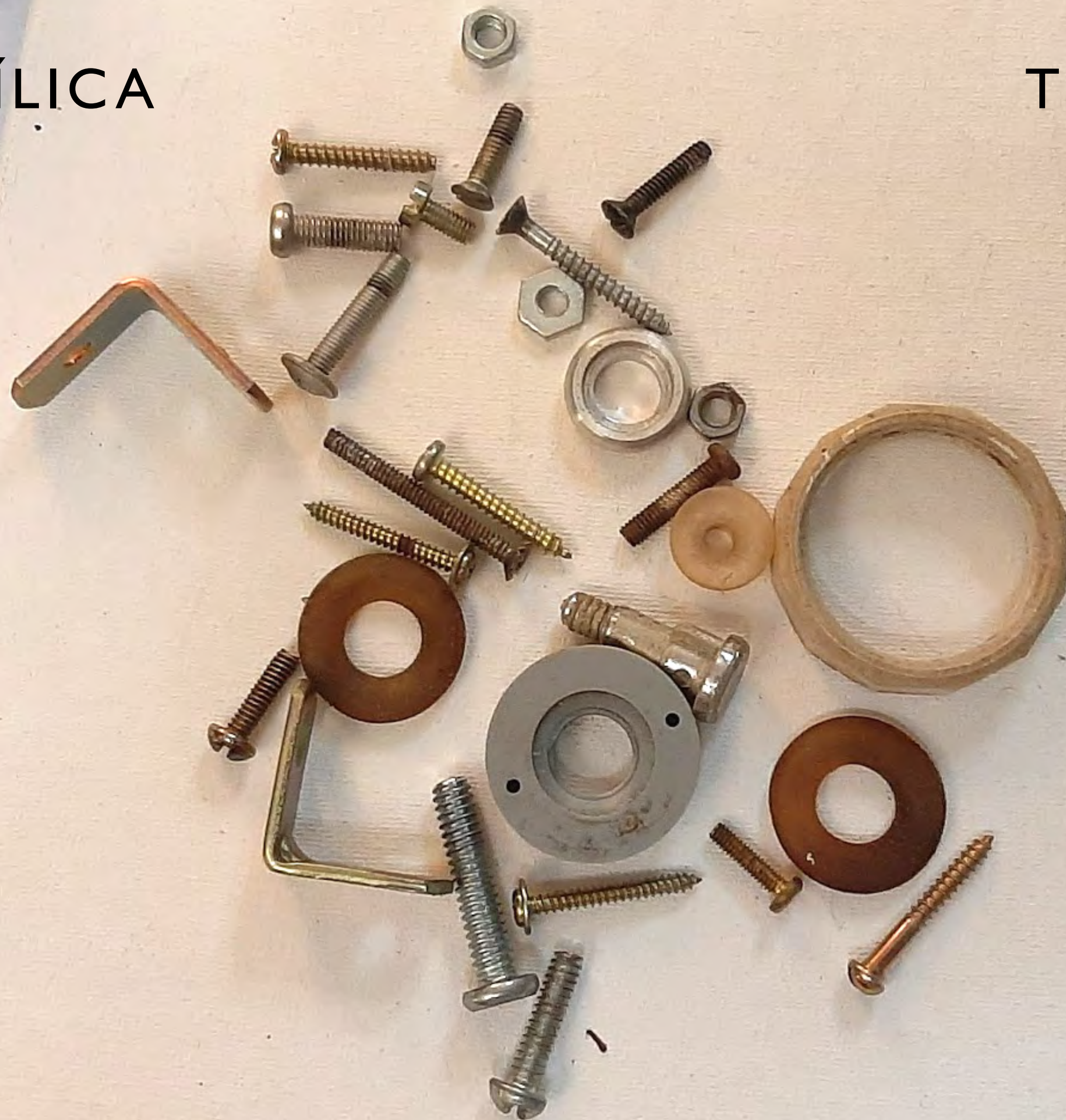
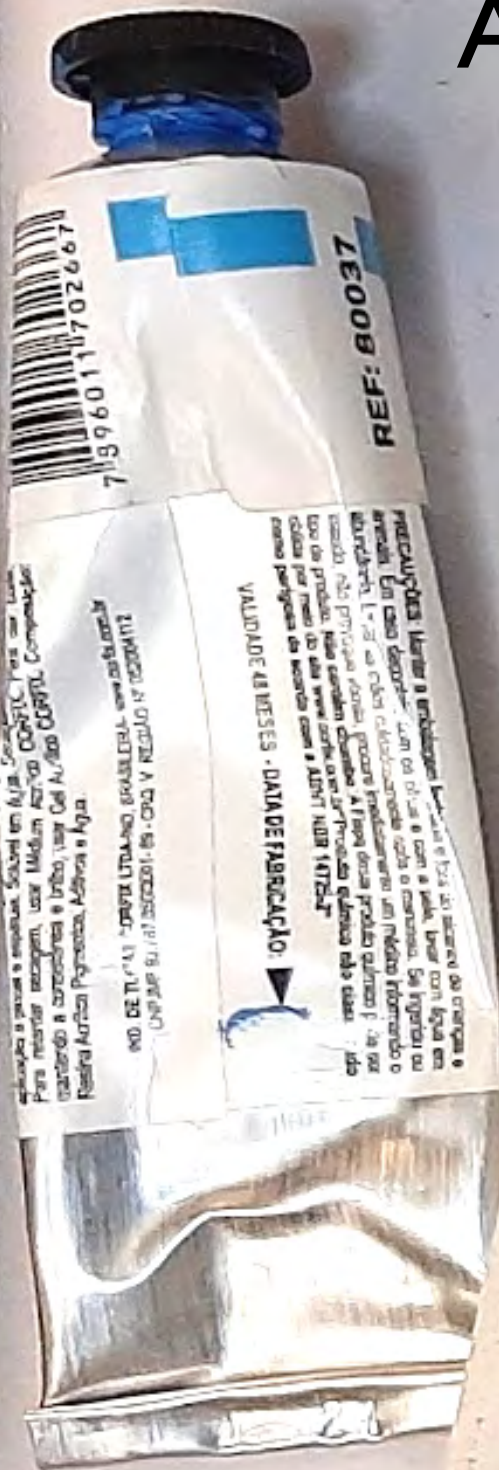
CAFÉ



TELA

ACRÍLICA

TELA





COMPOSIÇÃO

RECORTE
E COLAGEM

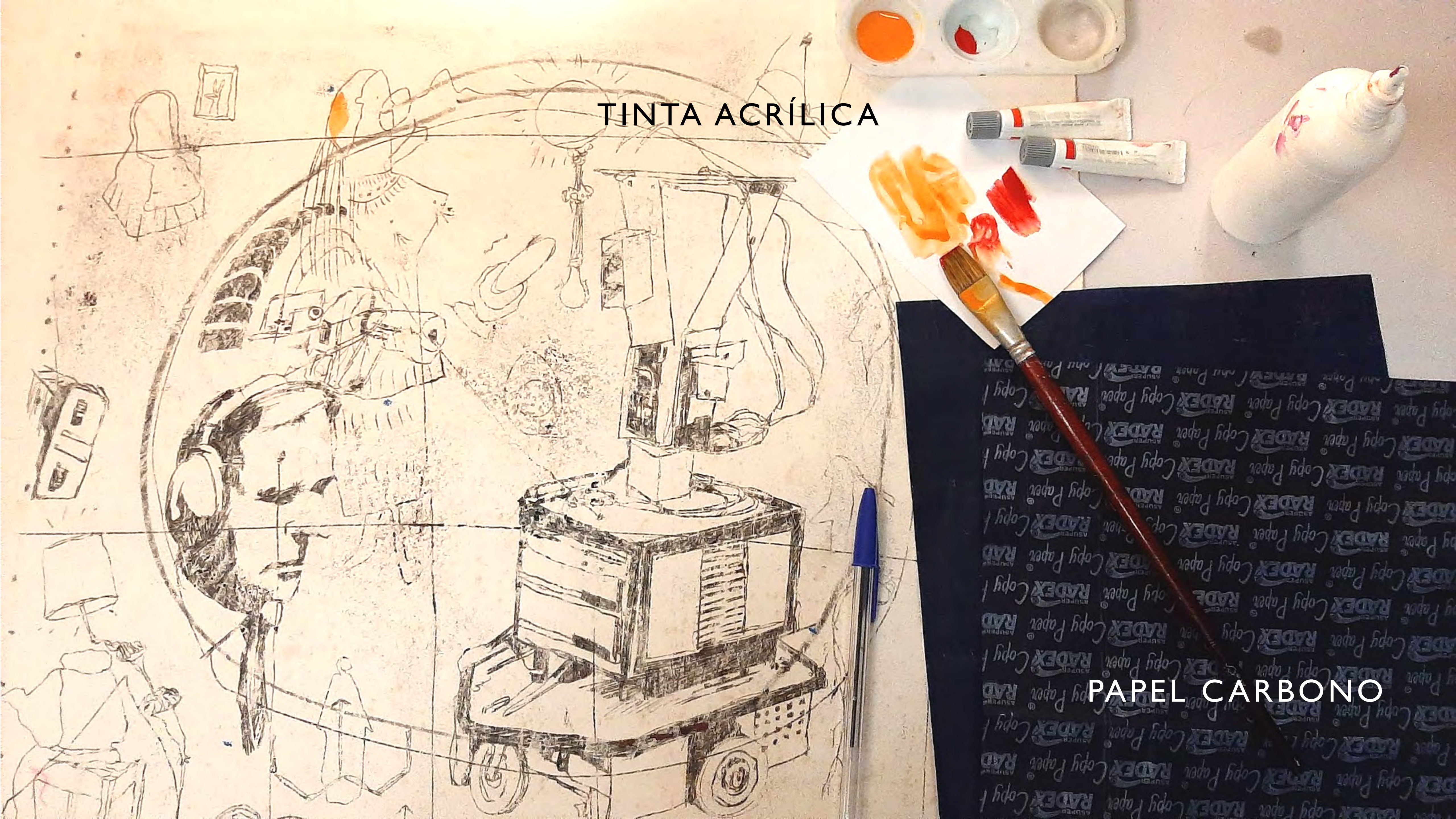
REAPROVEITAMENTO DE PAPEIS DE TESTE PARA NOVA ARTE



An abstract artwork featuring a complex layering of colors and textures. The background is a deep red, over which various shades of pink, purple, and blue are applied in thick, textured strokes. A large, irregular piece of white paper is torn and layered over the center, revealing the underlying colors. The overall effect is one of depth and visual complexity.

RASPAGEM DE TINTA COM ESPÁTULA SOBRE SUPORTES DIVERSOS

TINTA ACRÍLICA



PAPEL CARBONO