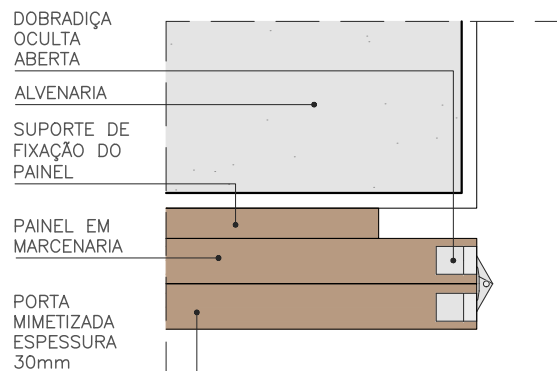
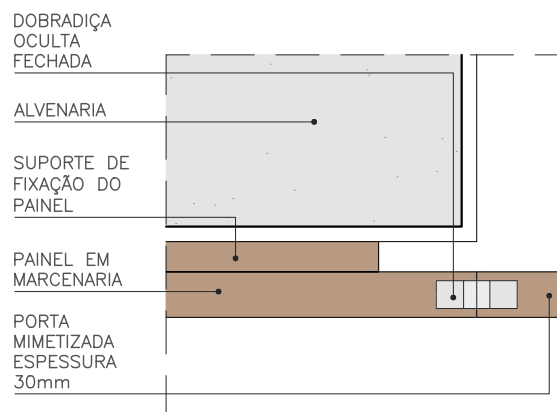


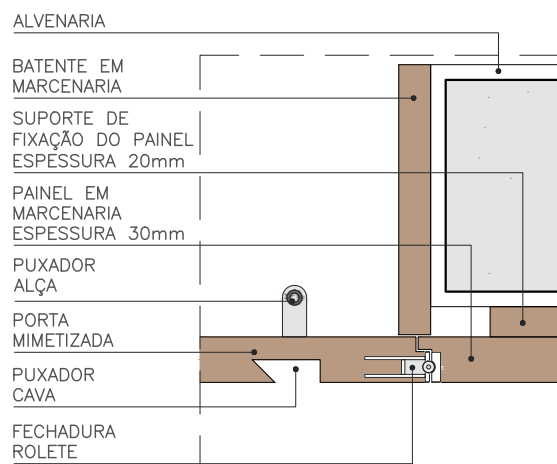
PLANTA
ESC. 1:25



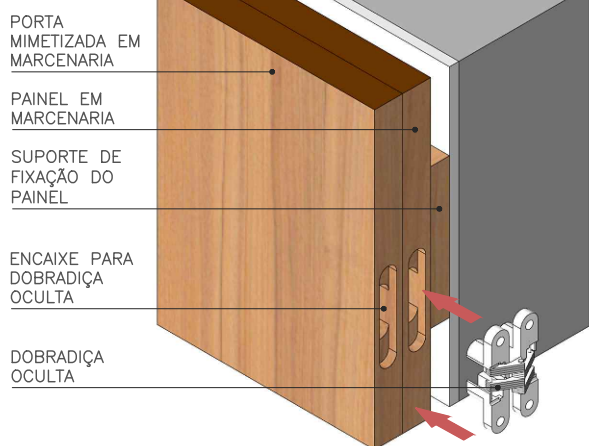
DET. 01 - PORTA ABERTA
ESC. 1:5



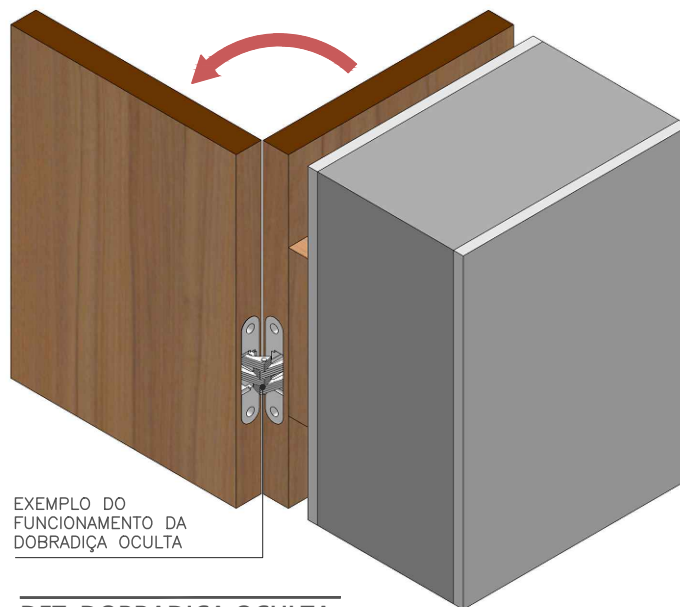
DET. 01 - PORTA FECHADA
ESC. 1:5



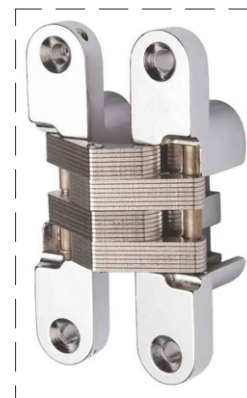
DET. 02
ESC. 1:5



DET. DOBRADIÇA OCULTA
SEM ESCALA



DET. DOBRADIÇA OCULTA
SEM ESCALA



DOBRADIÇA OCULTA

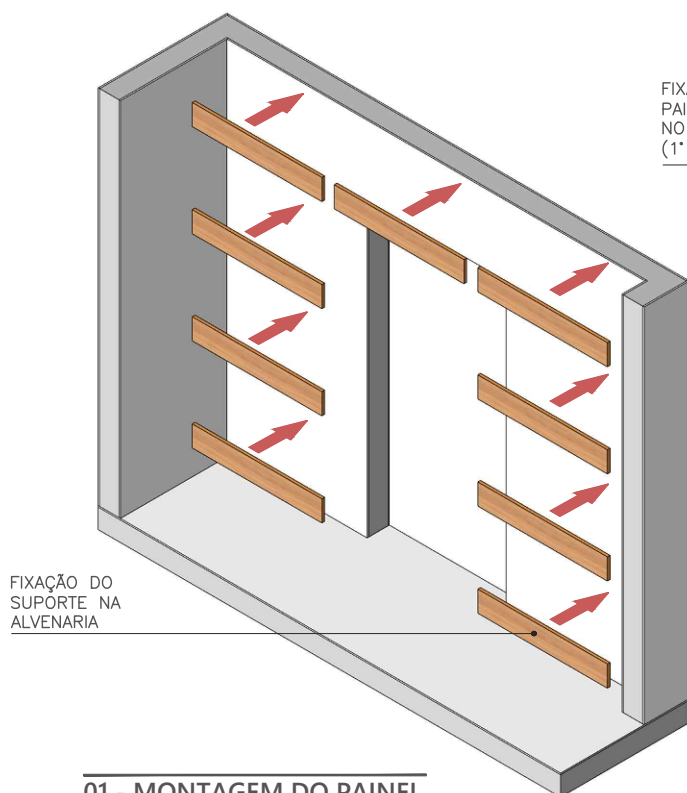


FECHADURA ROLETE

■ ESPESSURA DO PAINEL E DA PORTA DEVEM SER MAIORES QUE A LARGURA DA DOBRADIÇA OCULTA - MÉDIA 30mm

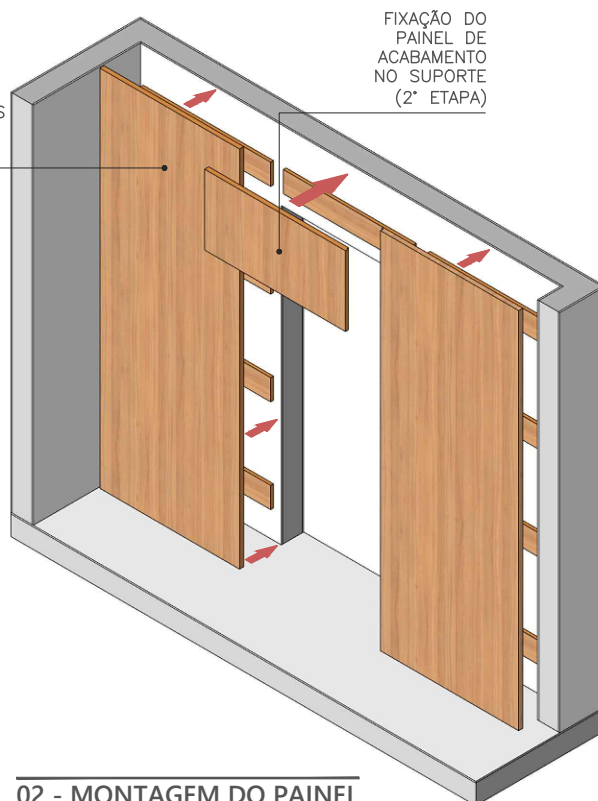
■ POSICIONAR PUXADOR OCULTO NO LADO EXTERNO E MAÇANETA CONVENCIONAL NO LADO INTERNO DA PORTA



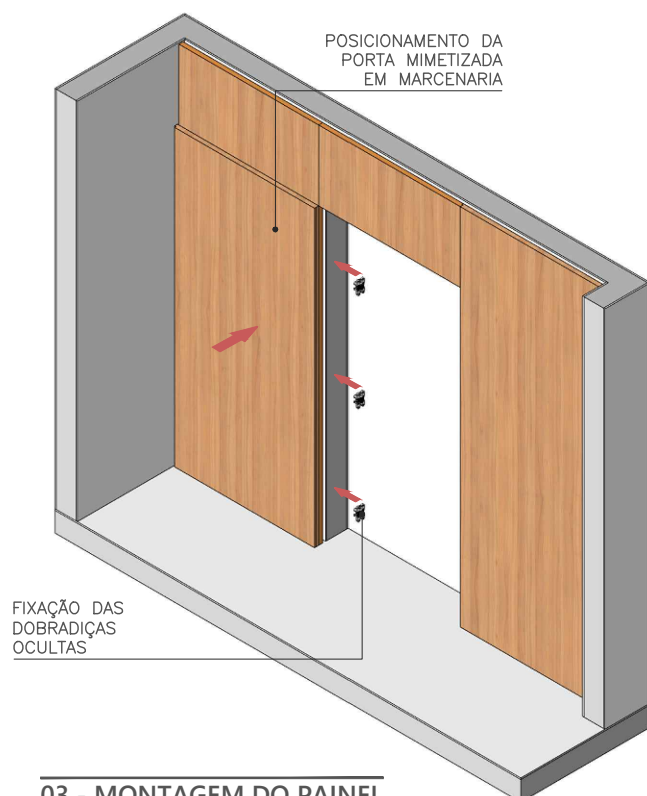


01 - MONTAGEM DO PAINEL

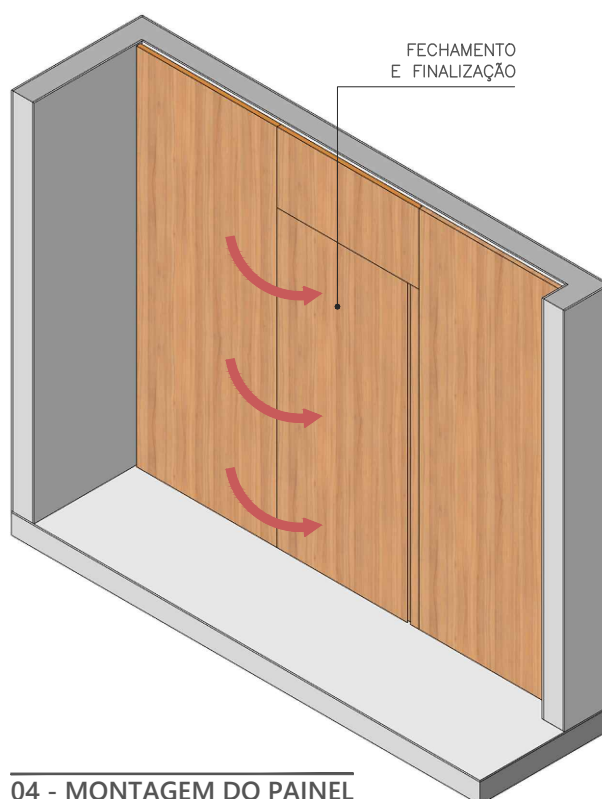
FIXAÇÃO DOS PAINÉIS VERTICAIS NO SUPORTE (1ª ETAPA)



02 - MONTAGEM DO PAINEL



03 - MONTAGEM DO PAINEL



04 - MONTAGEM DO PAINEL

■ A DOBRADIÇA OCULTA PERMITE AJUSTES DA PORTA VERTICAIS, LATERAIS E FRENTE/TRÁS

